

Testing Modular Applications on the NetBeans Platform

Geertjan Wielenga
NetBeans Team

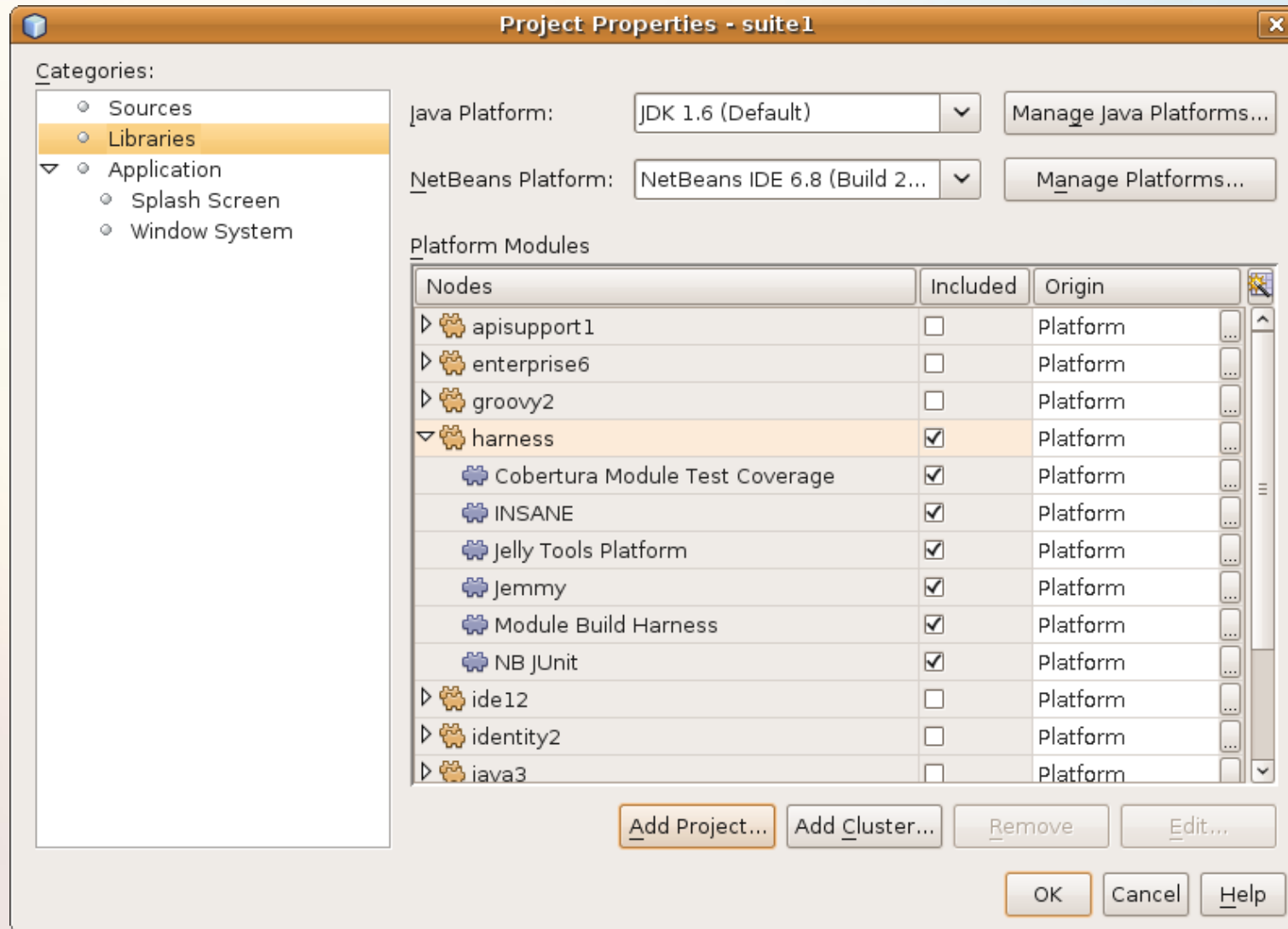
Agenda

- Testing Frameworks
- Modules for Testing
- Dependencies on Modules for Testing
- Typical Test Class
- Other Tools
- Resources

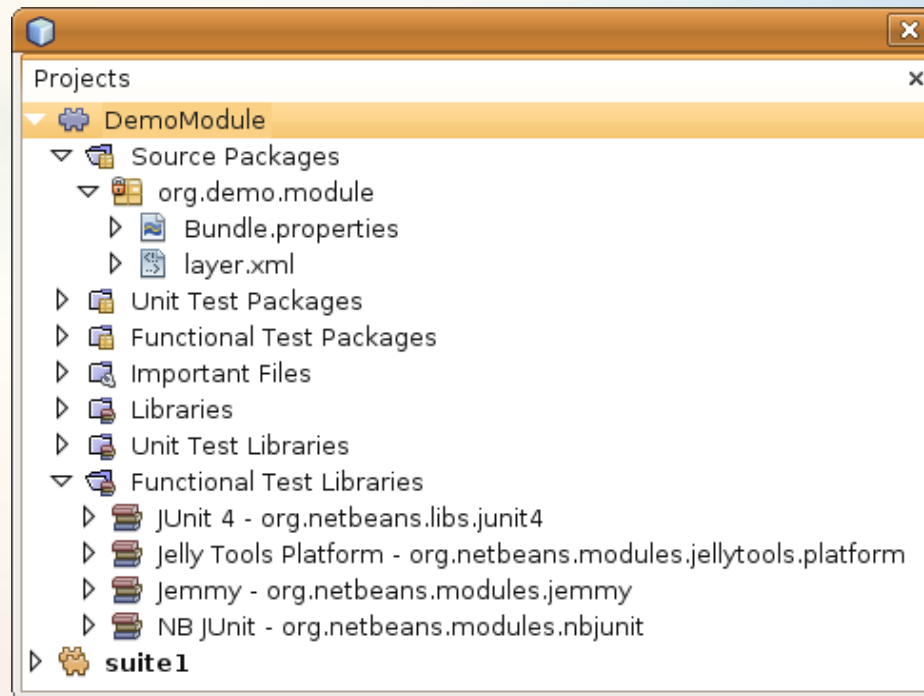
Testing Frameworks

- Junit >>> NBJunit
- Jemmy (<https://jemmy.dev.java.net>)
- Jelly Tools (NetBeans extension to Jemmy)
- Xtest >>> Simple Test

Modules for Testing



Dependencies on Modules for Testing



Typical Test Class

```
public class SampleTest extends JellyTestCase {

    public SampleTest(String name) {
        super(name);
    }

    public static Test suite() {
        Configuration testConfig = NbModuleSuite.createConfiguration(SampleTest.class);
        testConfig.addTest("testSomething");
        testConfig.clusters(".*").enableModules(".*");
        testConfig.gui(true);
        return NbModuleSuite.create(testConfig);
    }

    public void setUp() {
        System.out.println("##### "+getName()+" #####");
    }

    public void testSomething() {
        new Action("File|Some Action", null).perform();
    }

}
```

Other Tools Relating to Testing

- PMD (PMD scans Java source code for Bugs, duplications, ...)
- FindBugs (static code analysis)
- CheckStyle (Enforce Coding Standards)
- Lint4j (find Locking & Threading Issues)
- SQE (contains all 4) in a NB Plugin (sqe.kenai.org)

Resources

- <http://openide.netbeans.org/tutorial/test-patterns.html>
- http://blogs.sun.com/geertjan/entry/testing_testing_one_two_three
- <http://wiki.netbeans.org/DevFaqUsingSimpletests>
- <http://wiki.netbeans.org/XTestReplacementCookBook>

Questions & Answers
